



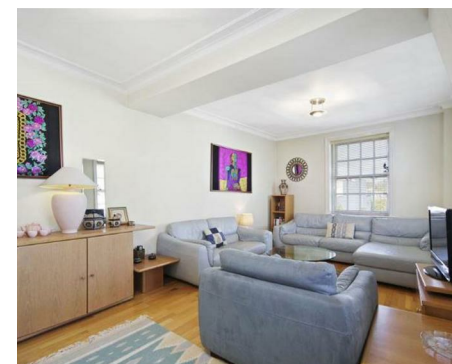
NEWINGTON
LONDON

2 Bedrooms

Apartment

Located in London

£790 Per Month



info@newingtonstates.com

<http://www.newingtonstates.com>

020 7724 2233



A beautifully presented, bright and spacious, two bedroom apartment situated on the second floor of this purpose built portered building. The accommodation comprises of a bright reception room, separate kitchen, double bedroom with built in storage, a second bedroom and family bathroom. Further benefits include hard wood floors, contemporary decor and quiet aspect throughout.

Rossmore Court is a purpose built portered block located a short walk to both Baker Street and Marylebone Stations as well as the open spaces of Regent's Park. The amenities of St John's Wood are also within easy walking distance.
EPC RATING: C

Energy Efficiency Rating:

Agents Note: Whilst every care has been taken to prepare these particulars, they are for guidance purposes only. All measurements are approximate and are for general guidance purposes only and whilst every care has been taken to ensure their accuracy, they should not be relied upon and potential buyers/tenants are advised to recheck the measurements.

NEWINGTON LONDON

60 Upper Montagu Street

London

W1H 1SN

020 7724 2233

info@newingtonstates.com

<http://www.newingtonstates.com>